



**SDOH ACADEMY**

Celebration of SDOH Innovation Webinar Series

# Celebration of SDOH Innovation

Webinar Series: Session 1

Presented by SDOH Academy Faculty

April 11, 2023



# Today's Facilitator



**Meghan Erkel, MPH**

Senior Project Manager  
Health Outreach Partners



# Today's Agenda



**Introductions & Housekeeping**

---

**Level Setting: Social Determinants of Health**

---

**SDOH Academy Activity Overview**

---

**SDOH Innovation Opportunities & Reflections**

---

**Special Presentation: Guy Fish, MD, MBA**

---

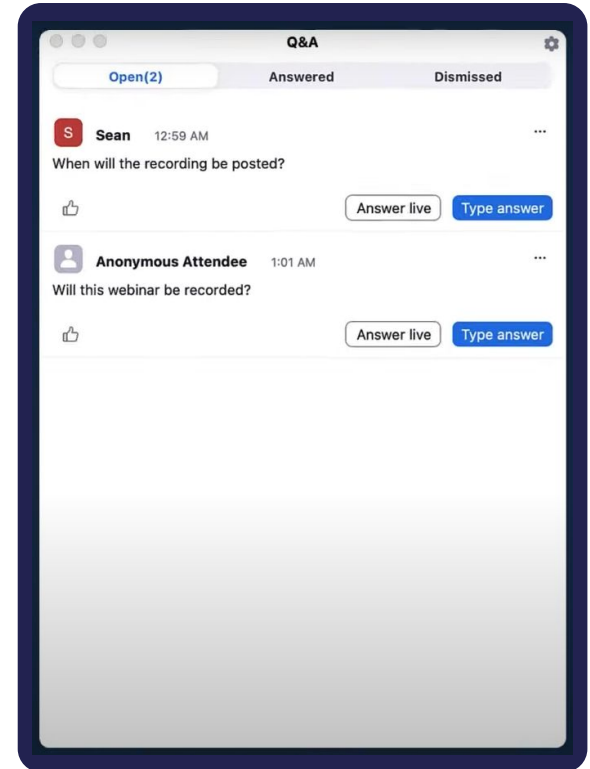
**Q&A**

---

**Evaluation and Close**

# Housekeeping

- All lines will be muted to prevent background noise
- Type questions into the chat or **Q&A window**
- This session will last approximately **60 minutes** and will be **recorded**. The recording and slides will be shared at [sdohacademy.com](https://sdohacademy.com) in a few business days.
- For technical assistance, please message any **"NCMLP" team member** via the chat



# Acknowledgement



This project is supported by the [Health Resources and Services Administration \(HRSA\)](#) of the U.S. Department of Health and Human Services (HHS) with 0 percent financed with non-governmental sources. The contents are those of the author(s) and do not necessarily represent the official views of, nor an endorsement, by HRSA, HHS, or the U.S. Government.

For more information, please visit [HRSA.gov](https://www.hrsa.gov).



# Today's Co-Facilitators



**Bethany Hamilton, JD**

Co-Director

National Center for Medical-Legal Partnership

National Center for Medical  Legal Partnership

AT THE GEORGE WASHINGTON UNIVERSITY



**Yuriko de la Cruz, MPH, CPHQ**

Program Manager, Social Drivers of Health  
National Association of Community Health Centers



# Who is the SDOH Academy?



The Social Determinants of Health (SDOH) Academy is a HRSA-funded workgroup of national training and technical assistance partners (**faculty**) who work together to develop training and technical assistance opportunities to help staff from health centers, health center-controlled networks, and primary care associations develop, implement, and sustain SDOH interventions in their clinics and communities.

[sdohacademy.com](https://sdohacademy.com)

# The Faculty



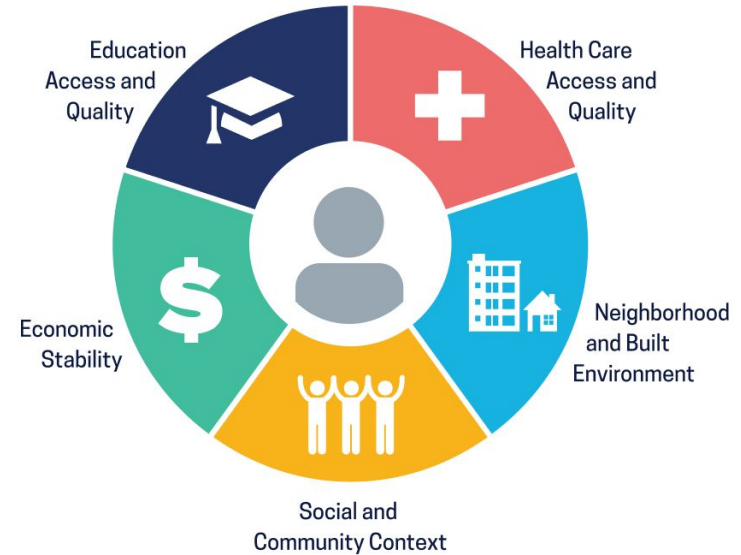
[sdohacademy.com](http://sdohacademy.com)



## Examples of SDOH include:

- Safe housing, transportation, and neighborhoods
- Racism, discrimination, and violence
- Education, job opportunities, and income
- Access to nutritious foods and physical activity opportunities
- Polluted air and water
- Language and literacy skills

## Social Determinants of Health



# What *is* SDOH Innovation?

Innovation is a new solution to an unmet need that has the ability to transform services, processes and systems to accelerate impact, as well as address SDOH factors to improve the health of their community.

Health Centers and Primary Care Associations have continued to develop and scale life-saving and life-improving innovations to improve the health and wellbeing of their communities.





**SDOH Academy**  
*Resources to Support  
Health Centers*

# 2021 Breakthrough Webinar Series



The SDOH Academy first offered a “Breakthrough Series” of webinars and office hours. During the series, SDOH Academy faculty helped participants “break through” the clutter to find the resources, experts, and peer linkages they need. Webinars were designed to equip participants with the tools needed to increase their competency in SDOH.

## Webinar 1: Improving Access to Quality Health Care and Services

[DOWNLOAD THE SLIDES](#)

*Presented by the Association of Asian Pacific Community Health Organizations, the Corporation for Supportive Housing, the National Center for Farmworker Health, and the National Association of Community Health Centers*

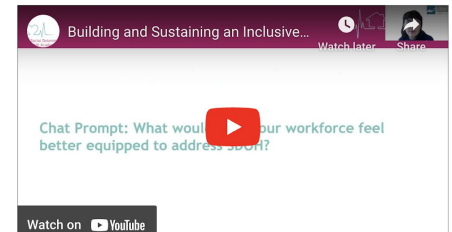
Recorded April 8, 2021



## Webinar 2: Building and Sustaining an Inclusive Workforce

[DOWNLOAD THE SLIDES](#)

*Presented by the The Association of Clinicians for the Underserved, the National Health Care for the Homeless Council, the National LGBT Health Education Center, and the National Nurse-Led Care Consortium*



<https://sdohacademy.com/breakthrough-recordings>

# 2022 SDOH Innovation Showcase Competition



The SDOH Academy Innovations Showcase Competition was an interactive training opportunity that incorporated an element of competition for health centers to showcase their innovations in the following core competencies:

Improving access to quality health care and services by increasing the capacity for patients to access SDOH services

Fostering a health care workforce able to address current and emerging needs related to SDOH

Enhancing population health and addressing health disparities through community partnerships and system delivery transformation

Increasing knowledge of emerging issues related to SDOH

<https://sdohacademy.com/innovations-showcase-competition>

# 2022 SDOH Innovation Showcase Winners



- 1. Kokua Kalihi Valley Comprehensive Family Services: [Hui Hoaka](#)**  
*Submission Category: Economic, Environmental, and Educational Factors as SDOHs*
- 2. AlohaCare: [A Promise of Hope](#)**  
*Submission Category: Economic, Environmental, and Educational Factors as SDOHs*
- 3. Center for Health Equity Transformation, Northwestern University Feinberg School of Medicine: [Reimagining Patient Navigation](#)**  
*Submission Category: Role of Data and Technology in the SDOHs*

Full submission list: <https://sdohacademy.com/innovations-showcase-competition>

# NEW! 2023 Resource Compendium



- As a collection of work produced by the SDOH Academy, this resource compendium can support organizations regardless of the stage of their SDOH response missions.
- This Resource Compendium helps to navigate through the foundations of responding to SDOH needs to a celebration of health centers' innovative practices.



<https://sdohacademy.com/resource-compedium>



**SDOH Academy**

*Supporting Health Center  
Innovation*



# Examples of HRSA's Efforts to Support SDOH-Related Innovation



HRSA's Bureau of Primary Health Care (BPHC) encourages innovation in three major areas:

- 1) [Quality Improvement Fund](#): activates innovation to improve health and health equity
- 2) [Prize Challenges](#): improve initiatives that work with health centers to support innovation by funding prize challenges to propose and test smaller scale innovation projects
- 3) [Ongoing BPHC training and technical assistance](#) to build health center innovation capacity through partnerships with state and regional Primary Care Associations (PCAs), National Training and Technical Assistance Partners (NTTAPs), and Health Center Control Networks (HCCNs).

# Accelerating Change: Reflection Questions



- How can health centers and community partners best advance and sustain efforts to address SDOH for their patients?
- How are we using technology to better identify and respond to SDOH risk factors?
- How can we use our limited resources to significantly move the needle towards ***change*** in our communities?

Read More: [Leveraging the Community and Innovation to Improve Health \(AHA\)](#)



# Special Guest Presentation

# Today's Guest Speaker



**Guy Fish, MD, MBA**  
CEO and President  
Greater Lawrence Family Health  
Center (*Massachusetts*)



# The Health Equity Compact

## Taking Bold Action Towards Health Equity

April 11, 2023

Guy L. Fish, MD MBA  
CEO – Greater Lawrence Family Health Center

# Purpose

The outsized impact on Black and Latinx communities in the COVID-19 pandemic has highlighted the urgency of why we must transform the Massachusetts healthcare system to eliminate racial and ethnic disparities in healthcare, and work towards health equity for all.

The Health Equity Compact is a group of **Black and Brown leaders** who aim to seize the current moment to create a new chapter in state health reform that will advance health equity.

We advocate for breakthrough change - policies that are **transformational**, **urgent**, and **essential**.

Note: With Asian leaders joining the Compact, we will be updating the description here and on the website.



**Allison Bryant**  
Associate Professor, Harvard Medical School Senior Medical Director for Health Equity, MGB



**Assaad Sayah**  
President and CEO, Cambridge Health Alliance



**Bisola Ojikutu**  
Executive Director, Boston Public Health Commission



**Cain Hayes**  
President/ CEO, Point32 Health



**Charles Anderson**  
President/ CEO, Dimock



**Christopher Lathan**  
Chief Clinical Access & Equity Officer, Dana Farber



**Claire Cooper**  
VP of Public Policy & Operations, MA Business Roundtable



**Claire Ceile Pierre**  
Associate CMO, VP Community Health, Brigham and Women's



**Damón Chaplin**  
Public Health Director, New Bedford Health Department



**David Williams**  
Professor, Harvard School of Public Health



**Deborah Enos**  
Professional Advisor and Board Member/ Senior Executive



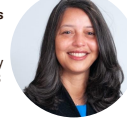
**Denise De Las Nueces**  
CMO, Boston Health Care for the Homeless Program



**Eduardo da Silva Haddad**  
President of Medical Staff, Lawrence General Hospital



**Elsie Taveras**  
Chief Community Health Equity Officer, MGB



**Filaine Deronnette**  
Vice President-at-Large, 1199SEIU, United Healthcare Workers East



**Frank Robinson**  
Vice President, Public Health & Community Relations at Baystate Health



**Frederica Williams**  
President & CEO, Whittier Street Health Center



**Greg Wilmot**  
President/ CEO, East Boston NHC



**Guale Valdez**  
President/ CEO, Mattapan Community Health Center



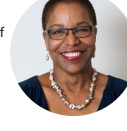
**Guy Fish**  
President & CEO, Greater Lawrence Family Health Center



**Jeffrey Sanchez**  
Instructor, Harvard T.H. Chan SPH Principal of Sanchez Strategies



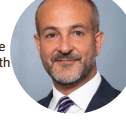
**Joan Y. Reede**  
Professor of Medicine, Harvard Medical School



**Jose de la Rosa**  
Co-Founder/ CEO at Guardian Healthcare



**Joseph Betancourt**  
President, The Commonwealth Fund



**Juan F. Lopera**  
Chief DEI Officer, BILH



**Kenn Turner**  
President and CEO, MA Life Sciences Center



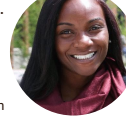
**Kevin Churchwell**  
President/ CEO, Boston Children's Hospital



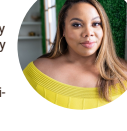
**Kiame Mahaniah**  
CEO, Lynn Community Health Center



**Kizzmekia S. Corbett**  
Assistant Professor, Harvard School of Public Health



**Lauren Powell**, VP, Health Equity & Community Wellness, Takeda Pharmaceuticals



**Lee Pelton**  
CEO/ President, The Boston Foundation



**Louis Brady**  
CEO, Family Health Center of Worcester



**Lumas Joseph Helaire**  
Asst Dean, PHM and Health Equity Education at Harvard T.H. Chan SpH



**Magnolia Contreras**  
Vice President, Community Health at DFCl



**Makeeba McCreary**  
Vice President, New Commonwealth Racial Equity and Social Justice Fund



**Manny Lopes**  
EVP, Blue Cross Blue Shield of MA



**Marcelo Suárez-Orozco**  
Chancellor, UMass Boston



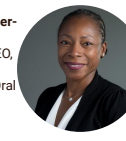
**Marty Martinez**  
CEO, Reach Out and Read



**Michael Curry**  
President/ CEO, Mass League of CHCs



**Myechia Minter-Jordan**  
President/CEO, CareQuest Institute for Oral Health



**Michelle Williams**  
Dean of the Faculty, Harvard TH Chan School of Public Health



**Nancy Norman**  
Medical Director of Integration, Massachusetts Behavioral Health Partnership



**Pablo Hernandez**  
CMO, Edward M. Kennedy Community Health Center



**Renée Landers**  
Professor of Law/ Faculty Director, Suffolk University



**Robert Higgins**  
President, Brigham and Women's, Executive VP, Mass General Brigham



**Ron Coursey**  
VP, FQHCs & Public Health, Quest Diagnostics



**Rosa Colon-Kolacko**  
Chief DEI Officer, Tufts Medicine



**Sandra Cotterell**  
CEO, Codman Square Health Center



**Shana Sullivan**  
Strategic Planning & Performance Director, UniCare



**Shari Nethersole**  
Executive Director for Community Health, Boston Children's Hospital



**Sheila Och**  
Chief Engagement and Equity Office, Lowell Community Health Center



**H = C**  
Health Equity Compact  
**Black and Latinx Leaders**  
Advancing Health Equity Together

**Stan McLaren**  
President/ CEO, Carney Hospital



**Tania M. Barber**  
President/ CEO Caring Health Center



**Thea James**  
Associate CMO, Boston Medical Center





# New Compact Members

**Amie Shei**  
President and CEO,  
Health Foundation of  
Central MA



**Mala M. Rafik**  
Partner, Rosenfeld &  
Rafik, P.C.



**Monica Bharel**  
Senior Public  
Health Advisor at  
Advanced Clinical



**Damian Archer**  
Chief Medical Officer,  
Tufts University School  
of Medicine



**Mary Bassett**  
Director, FXB Center,  
Harvard School of Public  
Health



**Oz Mondejar**  
Senior Business  
Executive



**Gary Chu**  
Vice President,  
Professional Affairs at New  
England College of  
Optometry; AAPI  
Commission



**Matilde (Mattie) Castiel**  
HHS Commissioner,  
Worcester Health  
Department, HPC Board



**Craig Andrade**  
Associate Dean of  
Practice and  
Director of the  
Activist Lab at BU  
School of Public  
Health



**Kedar Mate**  
President and CEO, Institute  
for Healthcare  
Improvement (IHI)



**Dr. Neel Shah**  
CMO, Maven Clinic;  
Co-Founder March for  
Moms; Asst. Prof, Harvard  
Medical School





# An Act to Advance Health Equity

(HD.2257 / S.799)

## Lead Sponsors



Sen. Pavel Payano



Sen. Liz Miranda



Rep. Judith Garcia



Rep. Bud Williams

# Our Policy Priorities

---

The Compact is working to advance state policy change in six priority areas:

1. Governance
2. Measurement and Accountability
3. Workforce
4. Healthcare Payment and Delivery Reform
5. Coverage and Access
6. Social Determinants of Health

# An Act to Advance Health Equity

This legislation aims to advance systemic policy changes that will support the fair and just opportunity for all residents of the Commonwealth to live healthy lives. It broadens and strengthens the state's foundation to advance health equity in the following ways:

Prioritize Equity  
in State  
Government

Standardize and  
Report on Data to  
Advance Health Equity

Improve  
Access and  
Quality of Care

# Prioritize Equity in State Government

- Create a new cabinet-level **Executive Office of Equity**, to be led by a Secretary of Equity
- **Diversify gender and racial and ethnic composition** within leadership of key state agencies, boards, and commissions
- **Invest in** community-defined and led efforts to build **healthier communities** by addressing the root causes of inequities

# Standardize and Report on Data to Advance Health Equity

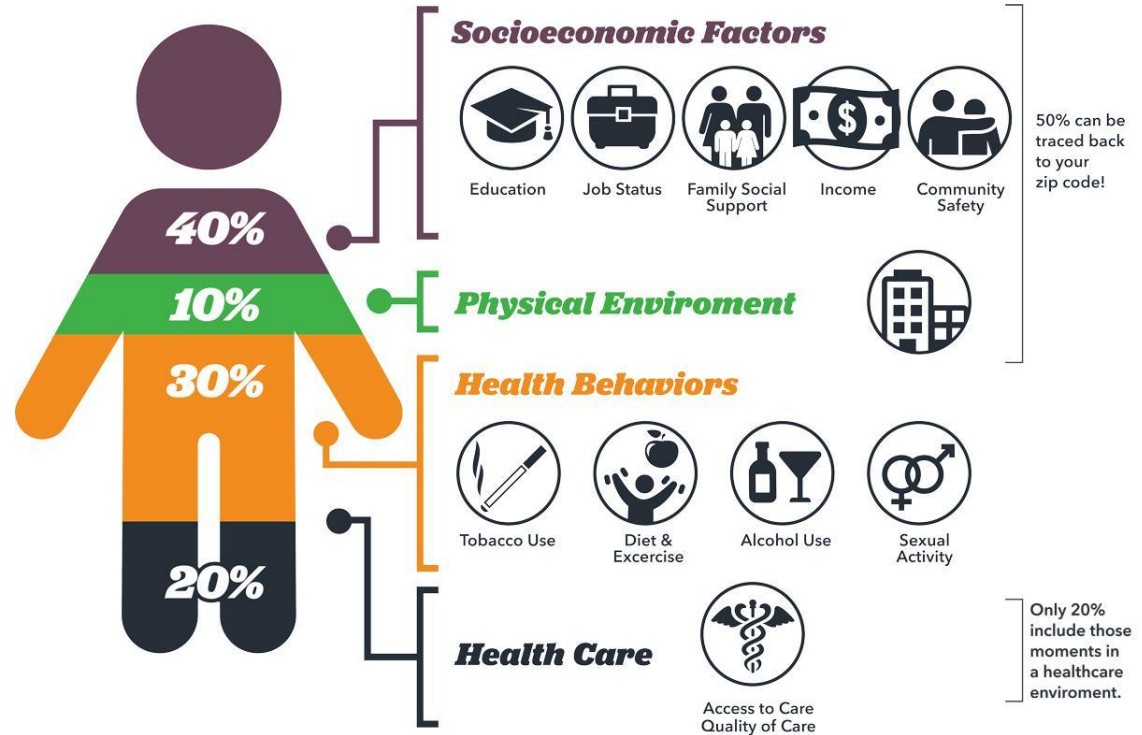
- Require the use of **standardized health equity data metrics** across provider and payer organizations and new accountability mechanisms for reporting the data
- Direct state agencies to **report publicly on data** to identify disparities and track progress on healthcare equity and social drivers of health in the Commonwealth

# Improve Access & Quality of Care

- Provide **full MassHealth coverage** for all people who are otherwise eligible, regardless of immigration status, including young people
- Address increasing cost burden of certain **medications for chronic conditions** that disproportionately affect communities of color and low-income communities
- Require **reimbursement parity for telehealth services** for primary care and chronic disease management
- Authorize a **career ladder program for diverse workers** who reflect the communities they serve in safety net hospitals and other community providers
- Require provider organizations to **meet or exceed national standards** for culturally and linguistically appropriate services and multicultural health care

# Societal Drivers of Health (SDoH)

Where we live, learn, work, and play has a great impact on health and health outcomes. We must address upstream inequities through **place-based, cross-sectoral collaboration**



Source: Institute for Clinical Systems Improvement, Going Beyond Clinical Walls: Solving Complex Problems (October 2014)

## *Address Societal Drivers of Health (SDoH)*

- Build new **regional equity infrastructure** to assess and track regional needs, form cross-sectoral partnerships, and ensure community representation in regional decision-making on land use, affordable housing, transportation, and anchoring/advancing investments in SDoH
- Establish and fund **Communities of Opportunity** or **Health Equity Zones**, which could include developing braided funding streams to create shared ownership
- Establish a **Health Equity Zone Trust Fund** that would fund multi-sector partnerships to identify and create community-determined health equity interventions in historically disinvested communities that have experienced poor health outcomes.
- Establish a **Health Equity Zone Advisory Board**, which will include community representatives with lived experience of health inequities in their communities, to make recommendations concerning the grants



# Compact Activities

- Engage with **stakeholders and policymakers** to cultivate broad support for An Act to Advance Health Equity
- Hold **community engagement forums** and **Coffee with the Compact** series
- Host the first ever **Health Equity Trends Summit**
- Collaborate with the Blue Cross Blue Shield of Massachusetts Foundation to develop a **Economic Cost of Inequities Report**
- Conduct a **public opinion poll** to demonstrate support for this work



Let's close the healthcare gap together.

Join us at the

## Northeastern Massachusetts Health Equity Forum

to view a film on health disparities & discuss solutions!



May 3, 2023

Lawrence Senior Center  
155 Haverhill St  
Lawrence, MA 01840

Welcome: 3:30pm

Movie & Food: 4:00 - 5:30pm

Presentation, Discussion &  
Dessert: 5:30 - 7:00pm

- Food provided
- Movie and presentation in English and Spanish

REGISTER NOW:  
[ht.ly/pbor](https://ht.ly/pbor)



Questions? email: [bbolling@massleague.org](mailto:bbolling@massleague.org)  
or [mary.lyman@glfhc.org](mailto:mary.lyman@glfhc.org)



## Contacts

Lindsey Tucker

[ltucker@massleague.org](mailto:ltucker@massleague.org)

Angel Bourgoin

[angel\\_bourgoin@jsi.com](mailto:angel_bourgoin@jsi.com)



[ht.ly/pbor](https://ht.ly/pbor)



Questions?

# Let's Continue the Celebration!



We invite you to continue the Celebration of SDOH Innovation Webinar Series with the SDOH Academy and join us for the next session on **April 18th, 2023 at 2:00PM (ET)**, where we will engage with a panel of experts in the field on what innovation means, how to address barriers to implementing programs focused on SDOH, and the future of this work!

## Panelists:

- Andrea Caracostis, MD, MPH, Chief Executive Officer HOPE Clinic
- Palak Jalan, BDS, MPH, Chief Population Health Officer, Access Health
- Olivia Riutta, Director of Special Populations, Montana Primary Care Association



Register at: [https://us02web.zoom.us/webinar/register/WN\\_Z1lj1PNnTkOOhbTnPWW-PA](https://us02web.zoom.us/webinar/register/WN_Z1lj1PNnTkOOhbTnPWW-PA)

# Resources for Health Centers



ABOUT ▾ PARTNERS ▾ SEARCH ▾ LEARNING ▾ PRIORITY TOPICS ▾ PROMISING PRACTICES ▾ CONNECT ▾

## The Public Health Emergency is Ending: Resources to Help Health Centers Respond

🗉 Search the Clearinghouse: Enter Search Terms Here

SEARCH

### Edit Your Search

🔍 Free Text Search

#### Topic and Subtopics:

Social Determinants of Health ▾

#### Population:

All Populations ▾

#### Organization:

Any Organization ▾

#### Primary Audience:

Any Primary Audience ▾

#### Resource Type:

Any Resource Type ▾

#### Language:

Any Language ▾

#### Sort By:

Newest Materials in the Collection ▾

Displaying records 1 through 20 of 505 found.

### [Strategies for Emergency Management of Chronic Conditions Among Agricultural Workers](#) (2023). [♥](#)

**Resource Type:** Publication. **Description:** People living with chronic conditions, and especially Migratory and Seasonal Agricultural Workers (MSAWs), can encounter particular threats to their health during an emergency event. NCFH has developed a resource to assist health center staff, clinical coordinators, and emergency managers with tools to assist MSAW chronic care patients, so that the worst outcomes of these events can be avoided. This checklist includes risk factors for chronic care patients during an emergency, action items to help patients prepare, and disease-specific recommendations for diabetes, cardiovascular disease, and chronic kidney disease. This resource also includes some additional outreach and communication strategies to reach MSAWs with chronic conditions during emergencies. [More Details...](#)

### [Health Centers Serving Veterans: Learn about the New PACT Health Benefits](#) (2023). [♥](#)

**Resource Type:** Archived Webinar. **Description:** This national audience webinar will provide health center

For more information on addressing SDOH, visit the [Health Center Resource Clearinghouse](#).

Please take a moment to complete the  
evaluation for today's webinar:

<https://www.surveymonkey.com/r/6CQDQWH>





THANK YOU